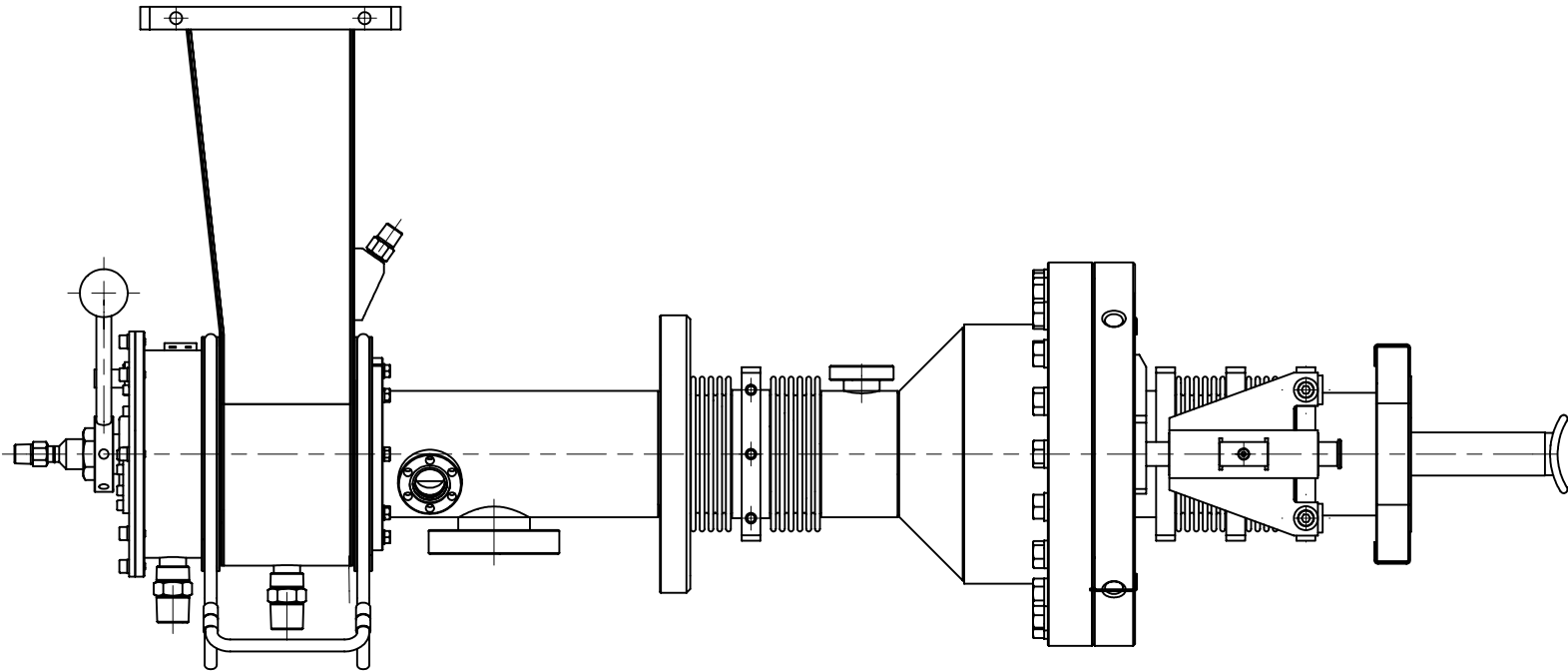
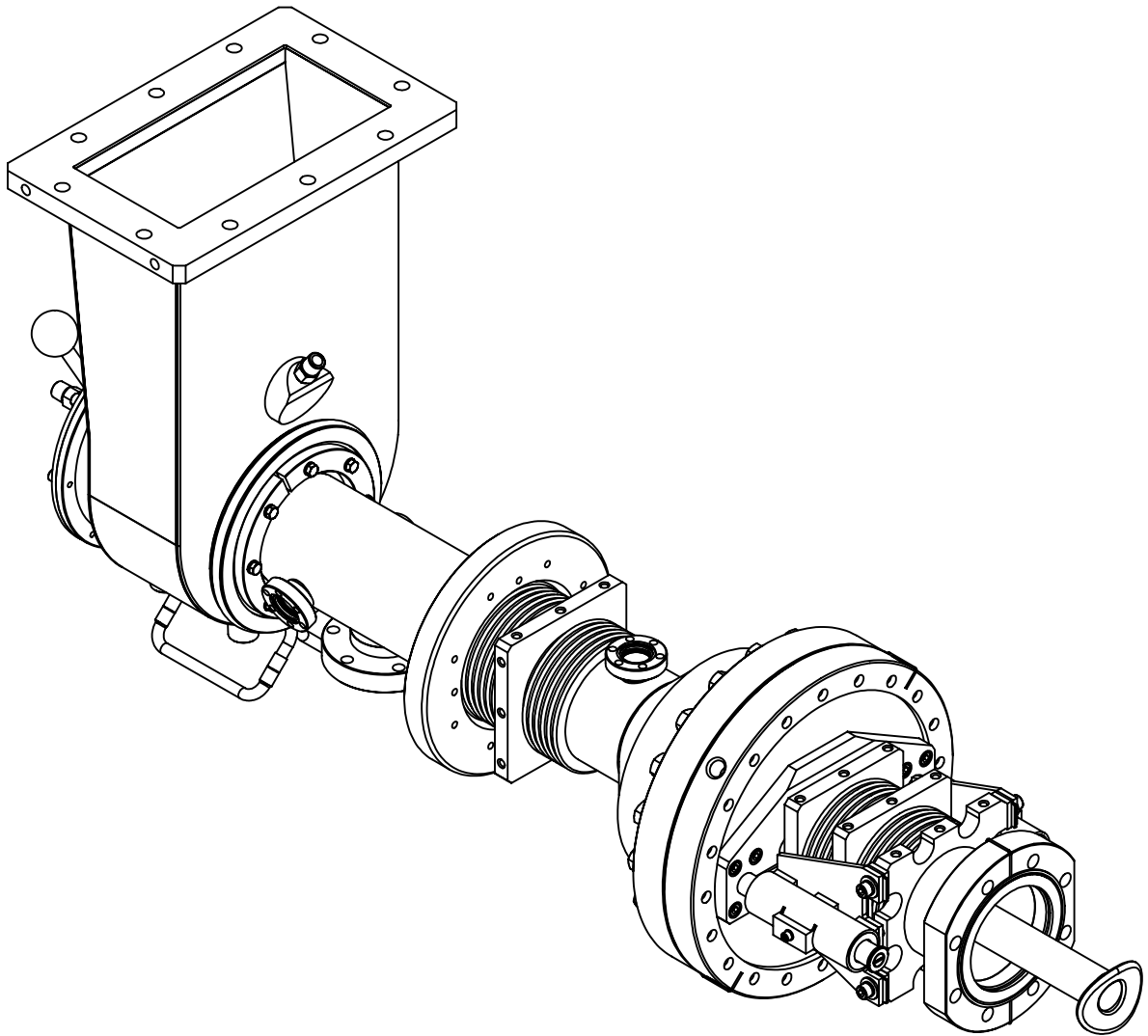
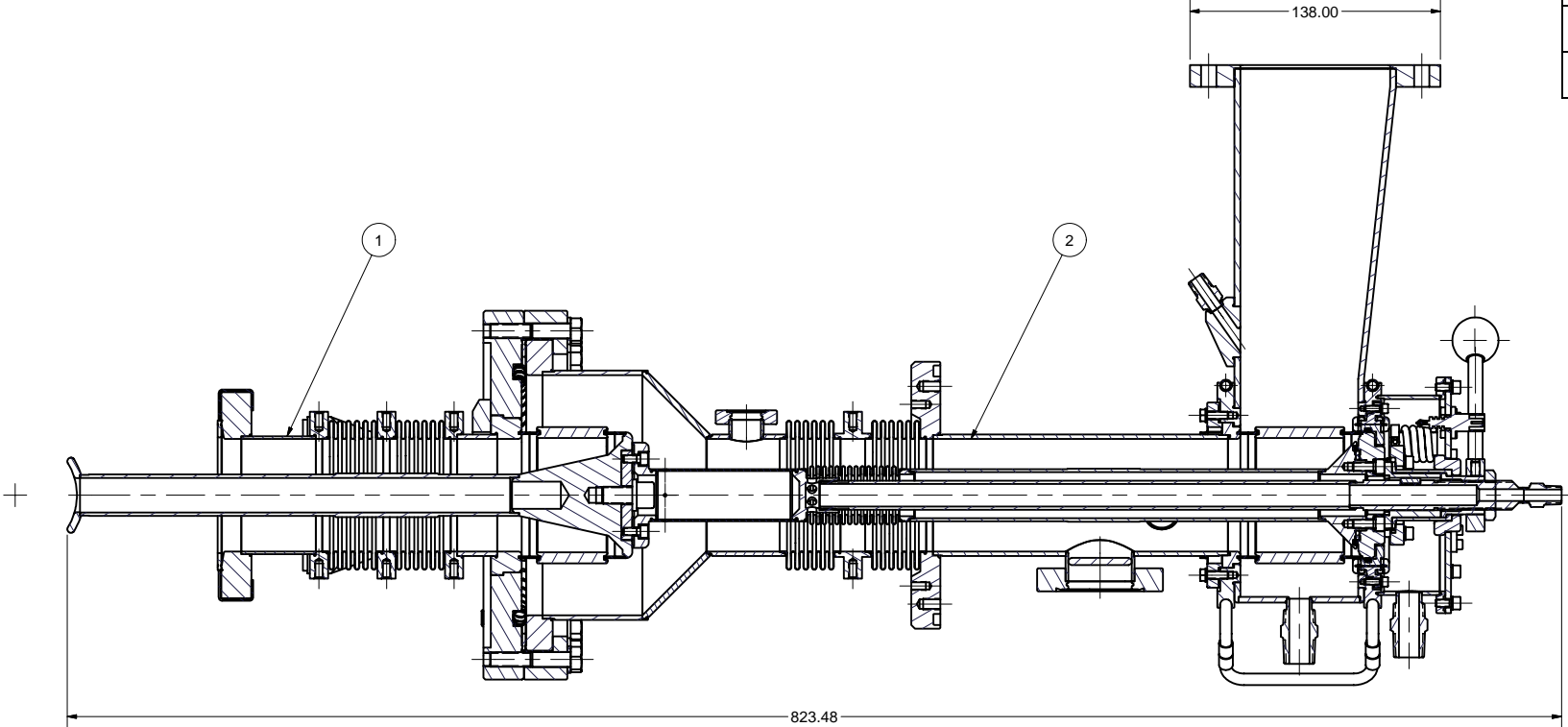
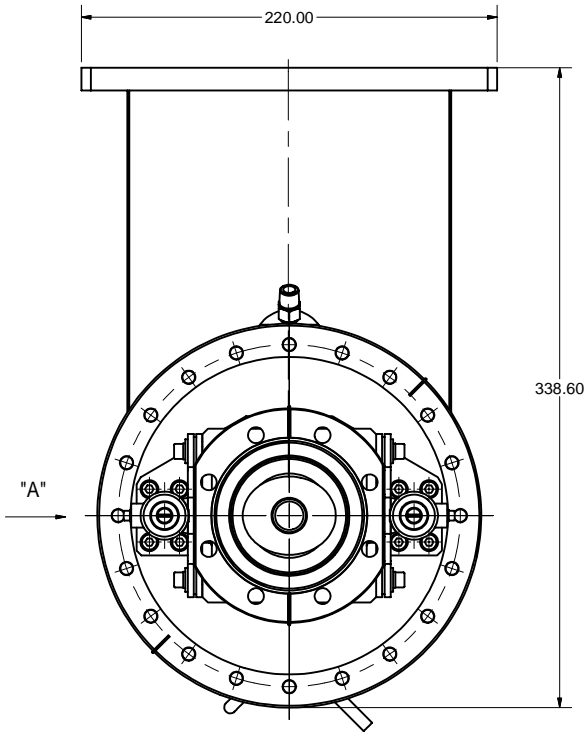
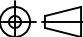





REVISIONS				
SYM.	ZONE	DESCRIPTION	DATE	APP.
A		NEW DESIGN FOR LINEAR GUIDE	/29/2006	SAB
C		Issued all design changes as Rev C (TIO)	4/19/07	SAB



VIEW "A"

NOTES:
1. ALL DIMENSIONS FOR REFERENCE ONLY.

		2	100.102.000	INPUT COUPLER, WARM	1					C
		1	100.101.000	INPUT COUPLER, COLD	1					C
	ITEM	DWG. NO.	DESCRIPTION	G1	G2	G3	REMARKS	REV.		
				QUANTITY						
 D	PRINT DISTR.	PLOT DATE: 4/19/2007 CAD FILE NAME: 7102-003-rev-C.idw								
	7102-003 SH. NO. 1 OF 1	UNLESS OTHERWISE SPECIFIED: DIMENSIONS ARE IN INCHES: TOLERANCES ON: .00 ± .010 .000 ± .005 FRACTIONS ± 1/64 ANGLES ± 0.5° ALL SURFACES 	<div><div> LEPP</div><div>CORNELL UNIVERSITY Floyd R. Newman Laboratory Ithaca, NY 14853</div></div> <div>ERL INJECTOR CRYOMODULE 75 kW CW INPUT COUPLER</div>							
		REV. C	CHECKED BY: VGV APPROVED BY: SAB	DRAWN BY VM	DRAWN FOR SAB	DATE 1/29/2006	SCALE 1:2	D	7102-003 SH. NO. 1 OF 1	REV. C